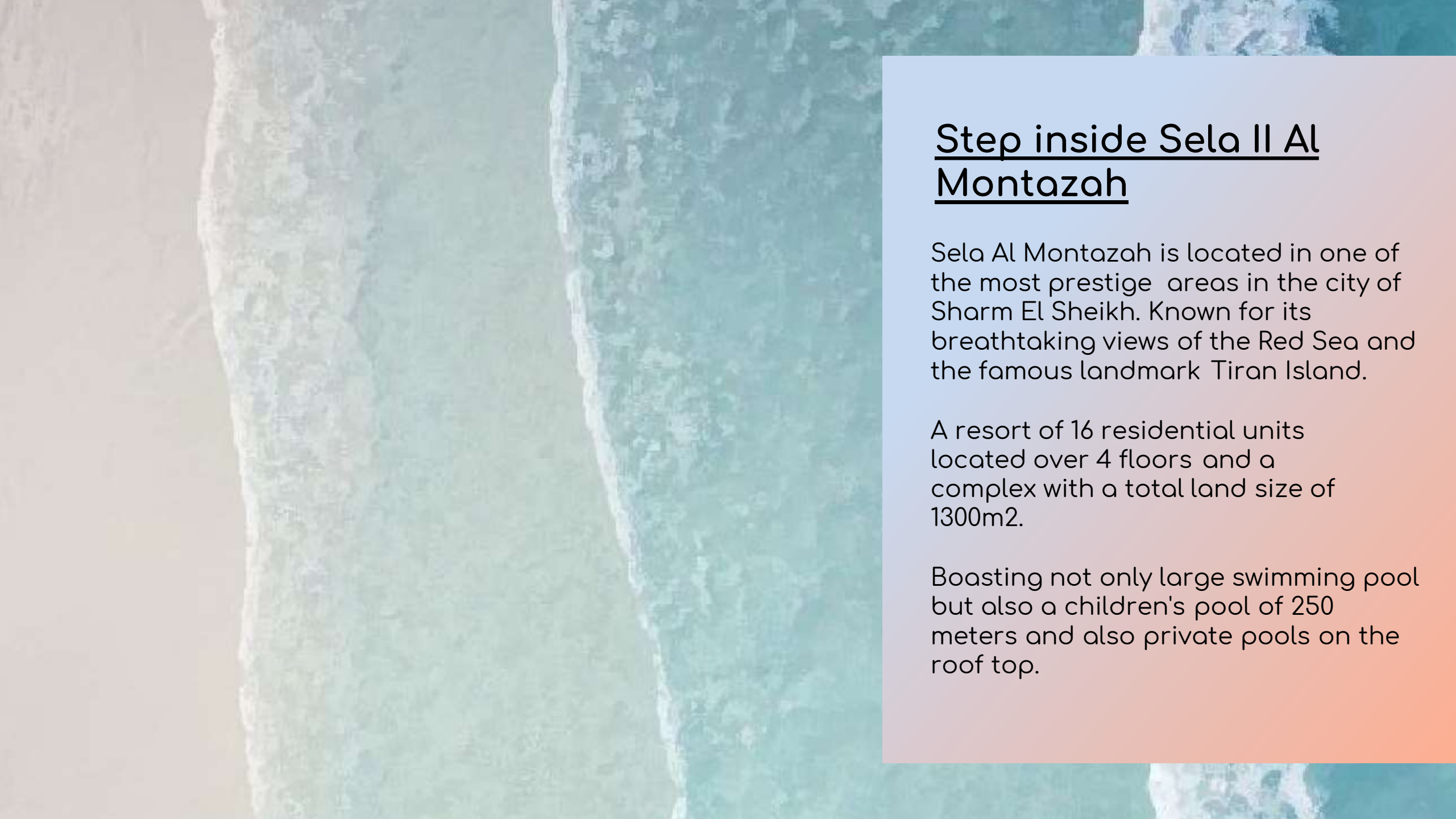


SELLA II

AL MONTAZAH



Step inside Sela II Al Montazah

Sela Al Montazah is located in one of the most prestige areas in the city of Sharm El Sheikh. Known for its breathtaking views of the Red Sea and the famous landmark Tiran Island.

A resort of 16 residential units located over 4 floors and a complex with a total land size of 1300m².

Boasting not only large swimming pool but also a children's pool of 250 meters and also private pools on the roof top.

عدد الأدوار بالمبنى
Floors number

٤ أدوار
4 FLOORS

١٨ وحدة
18 FLATS

إجمالي عدد الوحدات
Flats Total Numbers

إجمالي مساحة الأرض
Land Total Area

١٣٠٠ متر مربع
1300 m²



A new residential complex

- Located over 4 floors
- 16 residential units available
- A total land size of 1300m².
- A large complex swimming pool
- Childrens pool of 250metres
- Private pools on the roof top for duplexes.
- A Lift in the building





There are 4 apartments available on the ground floor at 125 m² all being 2 bedroom properties



1st

There are 4 apartments available on the first floor at 125 m2 all being 2 bedroom properties



Two Bedroom Property Layout...



2 Bedroom apartment

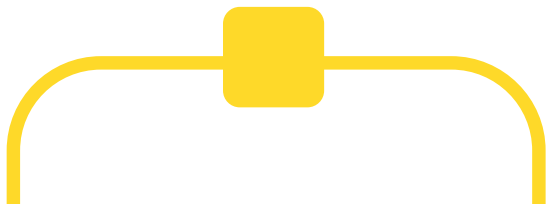
1 Bathroom



Large living room area



Kitchen



2nd

There are 4 apartments available on the second floor at 110 m² all being 1 bedroom properties



One Bedroom Property Layout...



1 Bedroom apartment

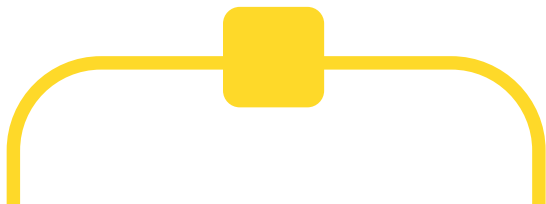
1 Bathroom



Large living room area



Kitchen



3rd

There are 4 apartments available on the third floor at 95 m² all being 1 bedroom properties



Third floor

FLOOR TOTAL AREA :

95 M

FLOOR FLATS NUMBER:

4 Flats



One Bedroom Property Layout...



1 Bedroom apartment

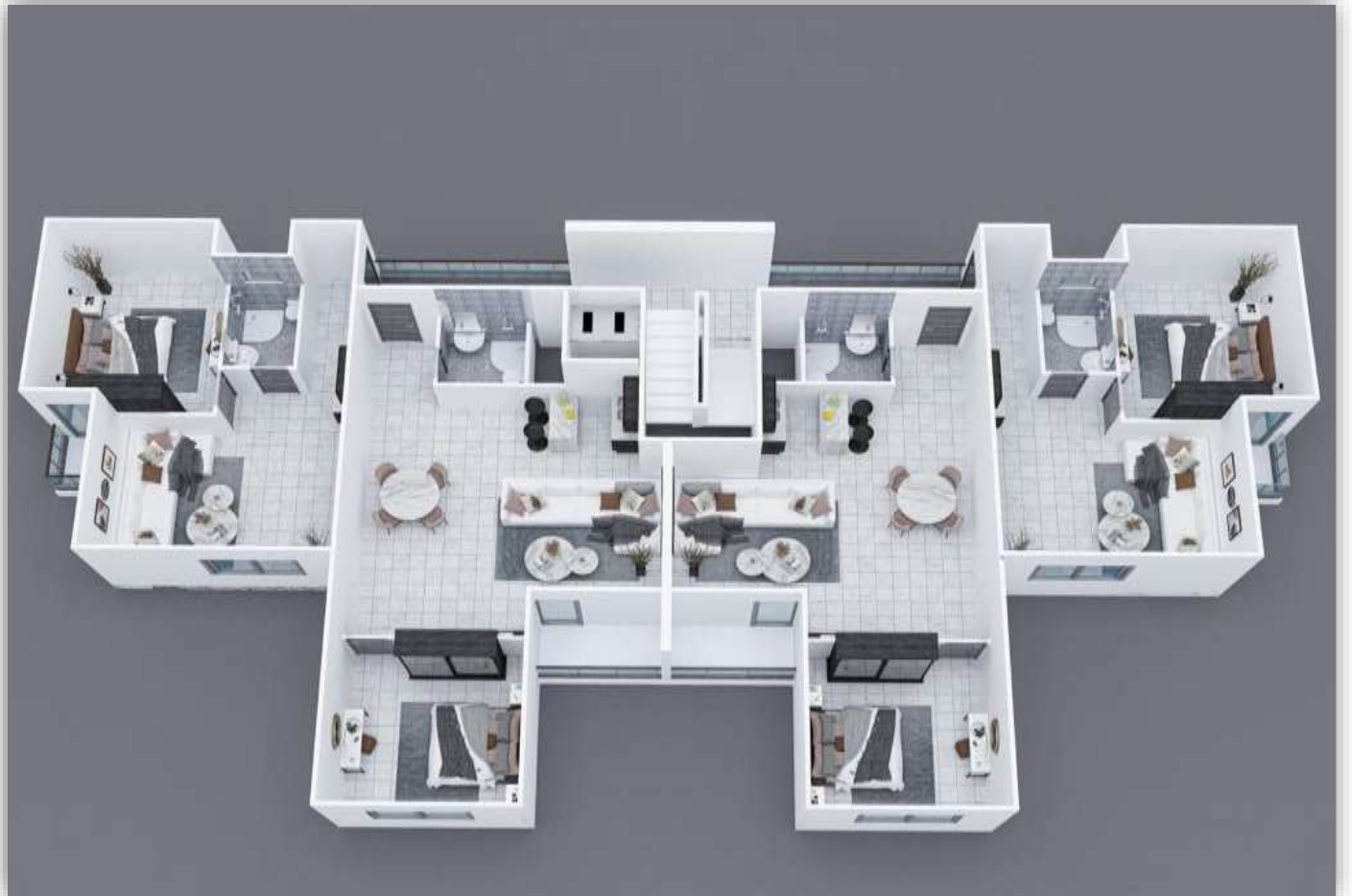
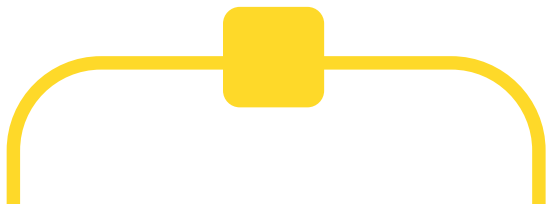
1 Bathroom



Large living room area



Kitchen





Features...



Within walking distance to the beach



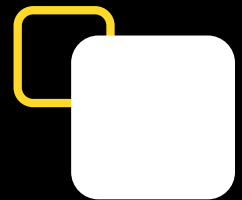
A location famous for it's amazing views of the Red Sea and Tiran Island



10 minutes to Sharm El Sheikh international Airport

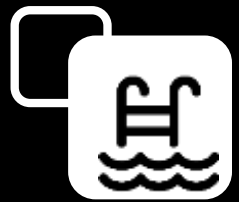


5 minutes to Soho Square



Breath taking sea views from all terraces





The complex swimming pools,
including a shallow pool of 250 meters for children





The total size of the land being 1,300 meters and the building size at 500 meters.



Payment Plan...



50%

Reservation Payment.



50%

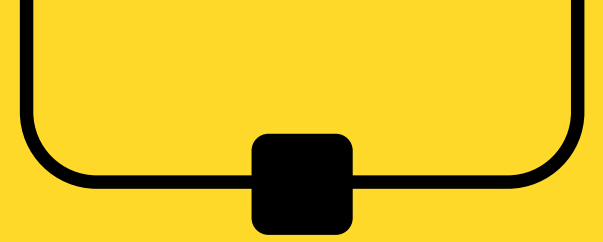
Installments over
18 months



Maintenance fee is
100Le per meter per year



Starting price: 16,000Le Per meter



Choose from 16 luxury apartments ranging in different sizes from 95sqm to 125sqm. Also, with a luxurious duplex available over 2 floors.

- Ground Floor (consisting of four- 2 bedroom apartments at 125sqm)
- First Floor (consisting of four - 2 bedroom apartments at 125sqm)
- Second Floor (consisting of four - 1 bedroom apartments at 110sqm)
- Third Floor (consisting of four - 1 bedroom apartments at 95sqm)



SELLA II

AL MONTAZAH

